

Comune di BIRORI

Prov. di NUORO

PROGETTO
DI UN PIANO DI LOTTIZZAZIONE SITO
IN LOCALITÀ "MARTAS"

OGGETTO:

TIPOLOGIE

TAV.:

9

ALL.:

SCALA:

1:200

DATA:

IL COMMITTENTE

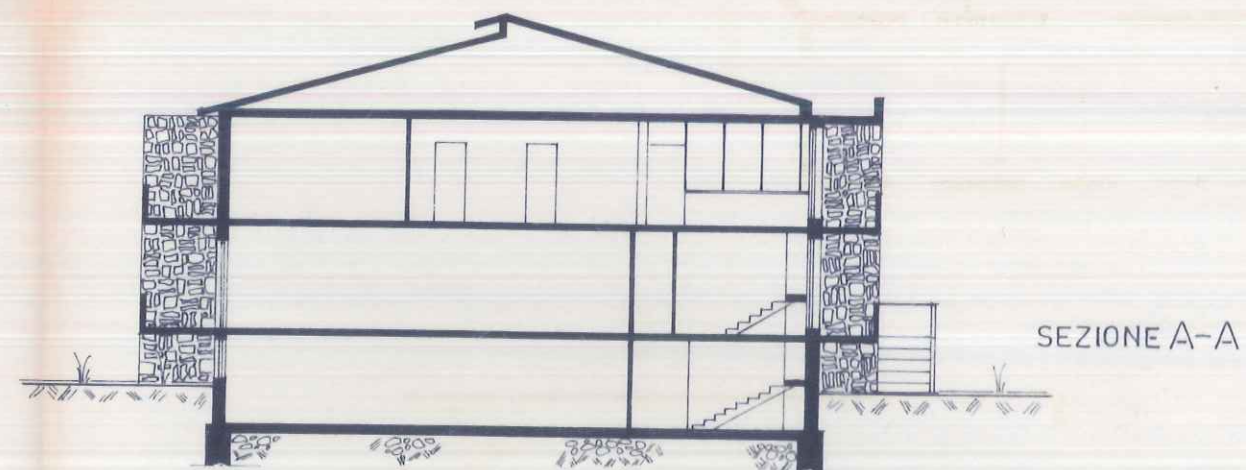
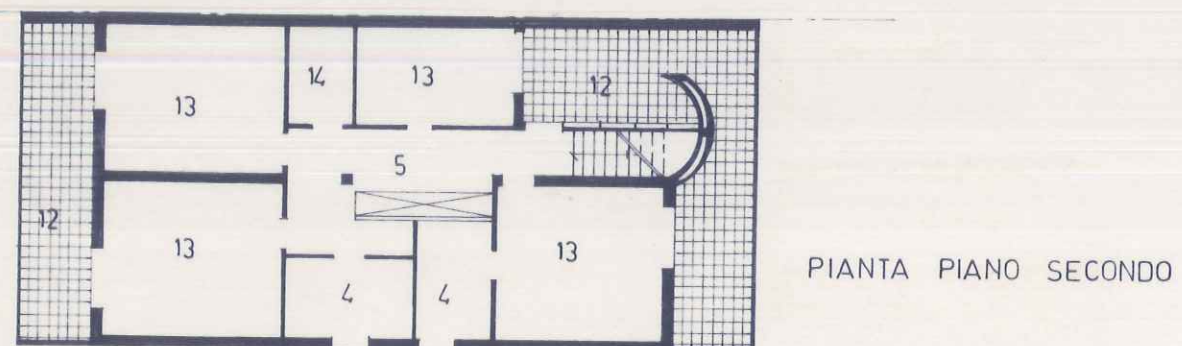
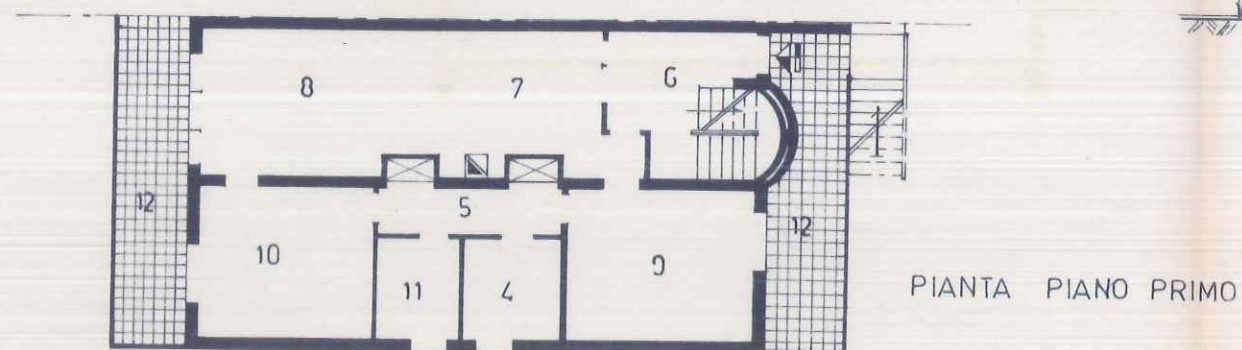
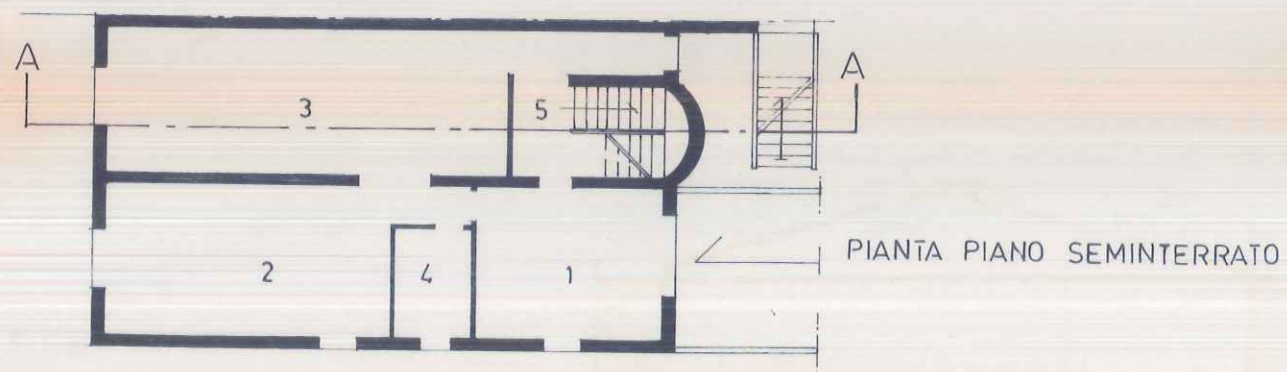
IL PROGETTISTA

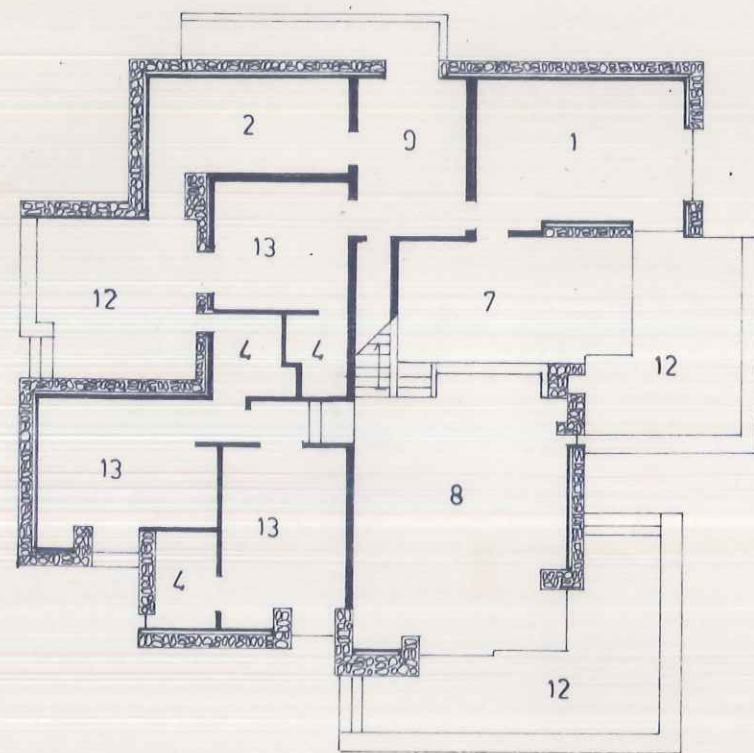


LEGENDA

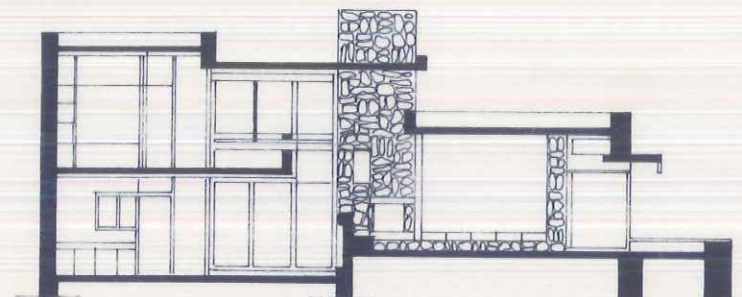
- 1 GARAGE
 - 2 CANTINA
 - 3 TINELLO
 - 4 BAGNO
 - 5 DISIMPEGNO
 - 6 INGRESSO
 - 7 PRANZO
 - 8 SOGGIORNO
 - 9 CUCINA
 - 10 STUDIO
 - 11 RIPOSTIGLIO
 - 12 TERRAZZO
 - 13 LETTO
 - 14 GUARDAROBA
- 

T₁ COSTRUZIONI A SCHIERA

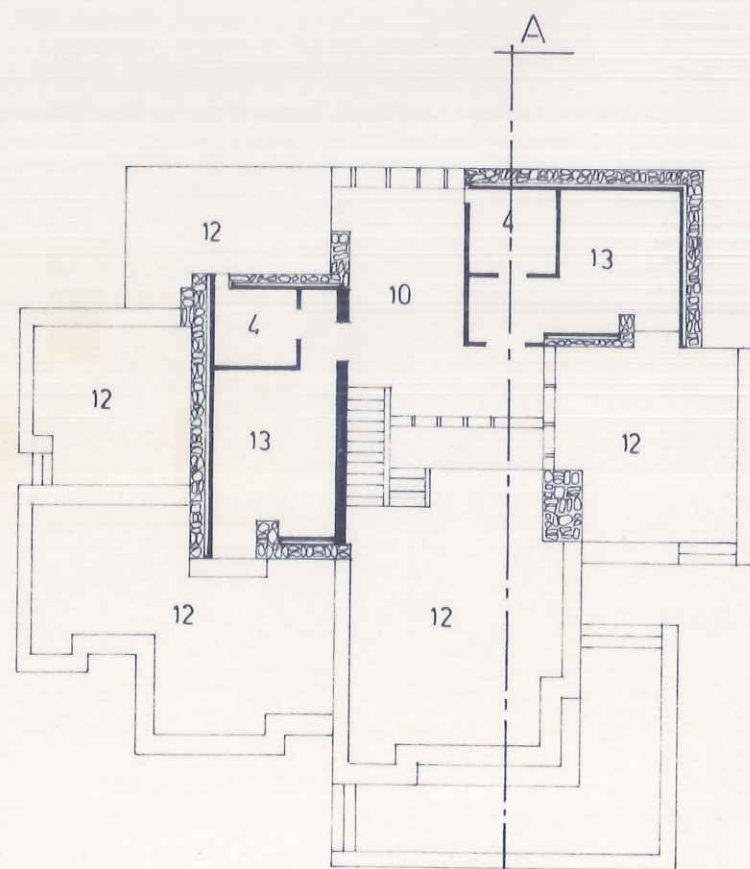




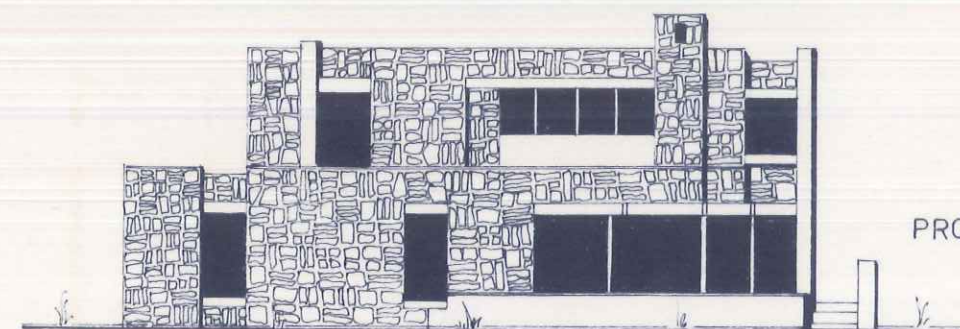
PIANTA PIANO TERRA



SEZIONE A-A

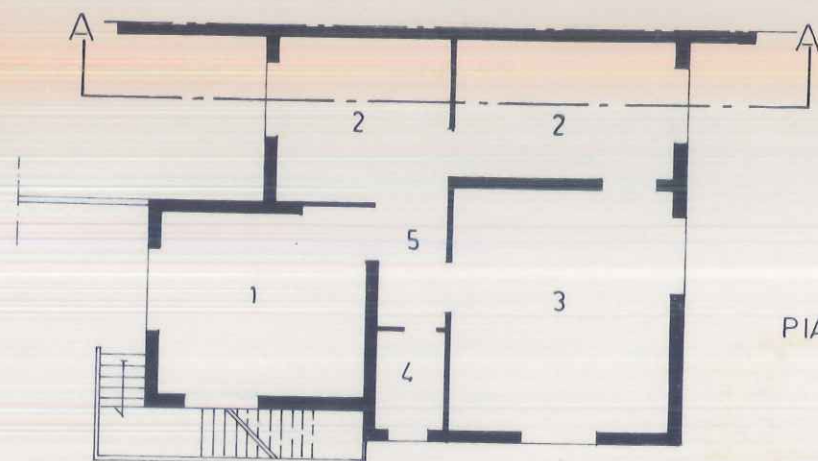


PIANTA PIANO PRIMO

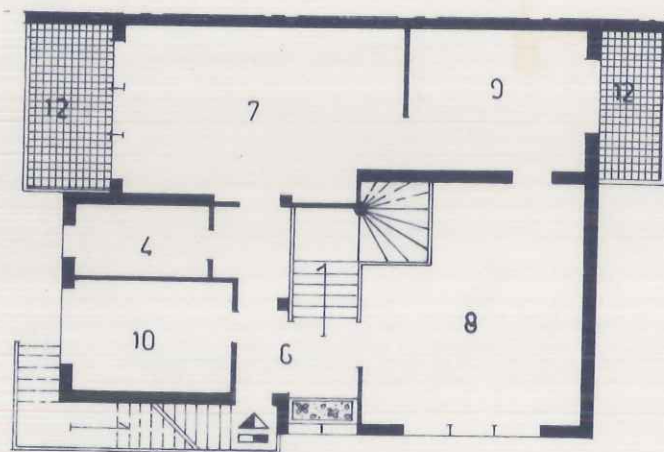


PROSPETTO

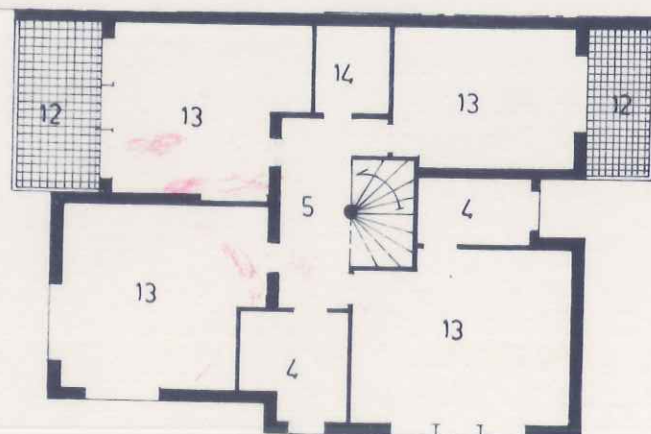
T₂ COSTRUZIONI A SCHIERA



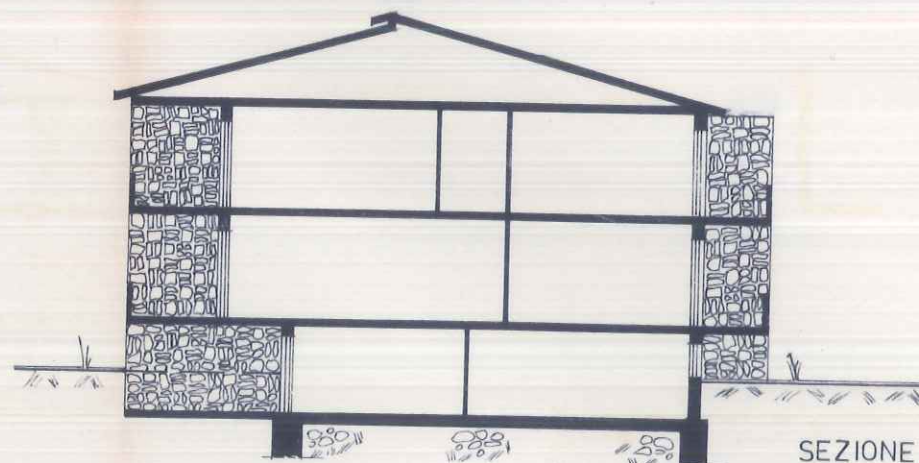
PIANTA PIANO SEMINTERRATO



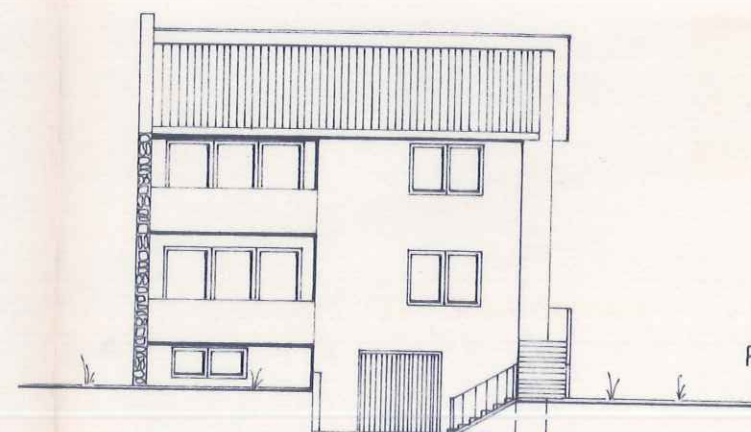
PIANTA PIANO PRIMO



PIANTA PIANO SECONDO



SEZIONE A-A



PROSPETTO