

NISSARDI ASSOCIATI

ARCH. MARINA BIANCHI MICHIEL - ARCH. FRANCESCO NISSARDI

36061 BASSANO DEL GRAPPA (VI) strada dei Pilati 28 tel. 0424. 500115 fax 0424. 503188
09127 CAGLIARI piazza Salento 6 tel. 070. 300884

con

SALVATORE PELUSO

e con la collaborazione di Roberta Milia

COMUNE DI BIRORI

Piano di lottizzazione in località "Nuscadore"

di proprietà di "Gli Asfodeli s.n.c."

tavola n.2

TIPI EDILIZI

Sistemazioni esterne e profili altimetrici

scala 1:200

il committente

il direttore dei lavori

il progettista

Dicembre 1994



CALCOLO DEI VOLUMI

Albergo:

$$(7,40 \times 13,20 \times 2 \times 6,68) + (1,60 \times 34 \times 6,80) + \\ + (20,30 \times 9 \times 7,10) + (34 \times 9 \times 7,10) + (2,20 \times \\ \times 38,3)/2 \times 34 = \text{mc. } 7.874,29$$

Torre:

$$(3,20 \times 5)/2 \times 10 \times 9,50 = \text{mc. } 760,00$$

Ristorante:

$$(22,60 \times 15 \times 7,40) + (14 \times 4,20 \times 2 \times 3,50) + \\ + (6,60 \times 3 \times 3,50) + (76,86 \times 15) = \text{mc. } 4.142,40$$

TOTALE mc. 12.776,69

CALCOLO SUPERFICIE COPERTA

Albergo:

$$(20,30 \times 9 \times 2) + (34 \times 9) + (7,40 \times 13,20 \times 2) + \\ + (1,60 \times 34) = \text{mq. } 921,16$$

Torre:

$$(3,20 \times 5)/2 \times 10 = \text{mq. } 80,00$$

Ristorante:

$$(22,60 \times 15) + (14 \times 4,20 \times 2) + (6,60 \times 3) = \text{mq. } 476,40$$

TOTALE mq. 1.477,56

CALCOLO S. L. P.

Albergo:

$$(671,40 + 54,40) \times 2 + 195,36 = \text{mq. } 1.646,96$$

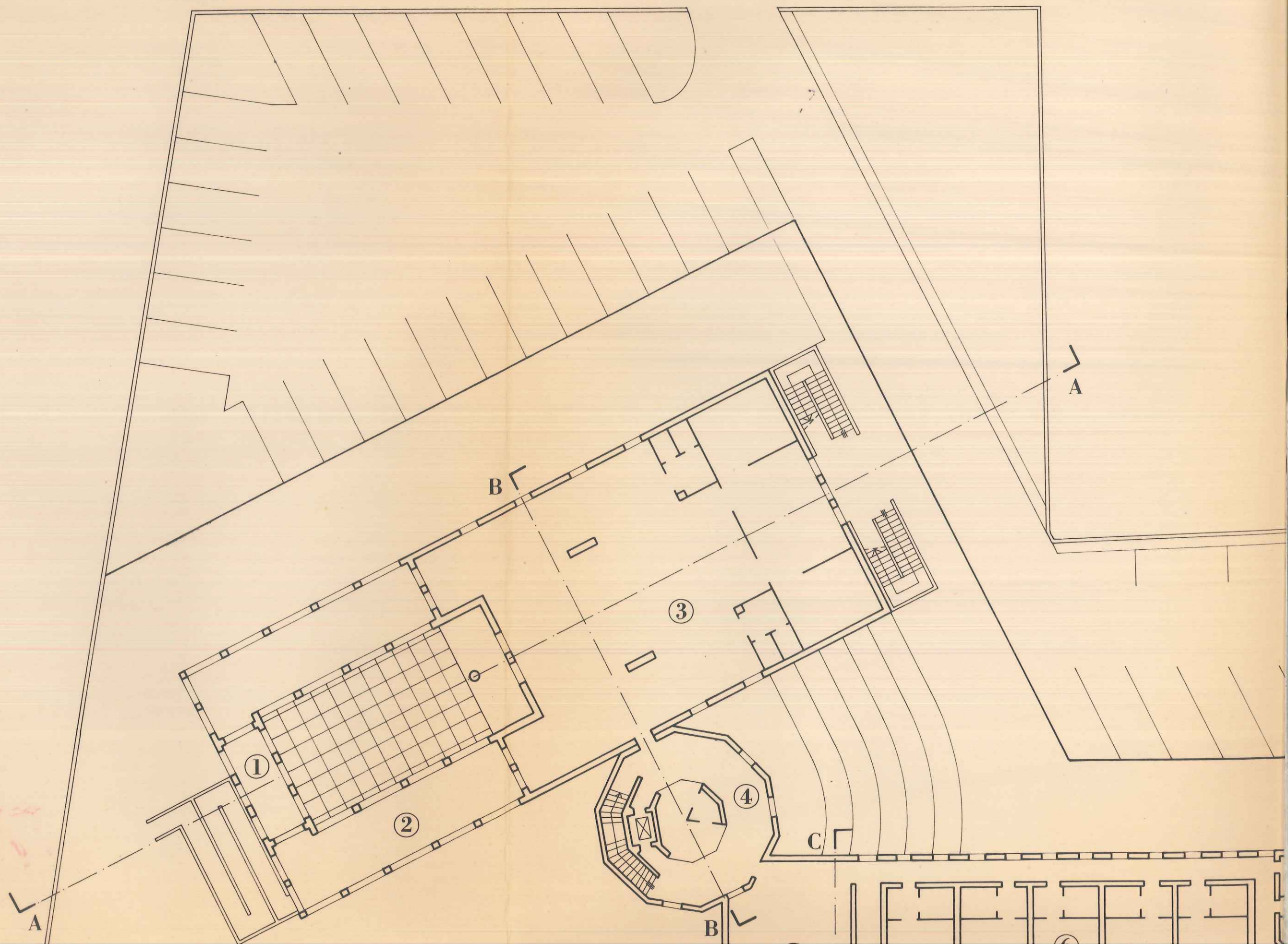
Torre:

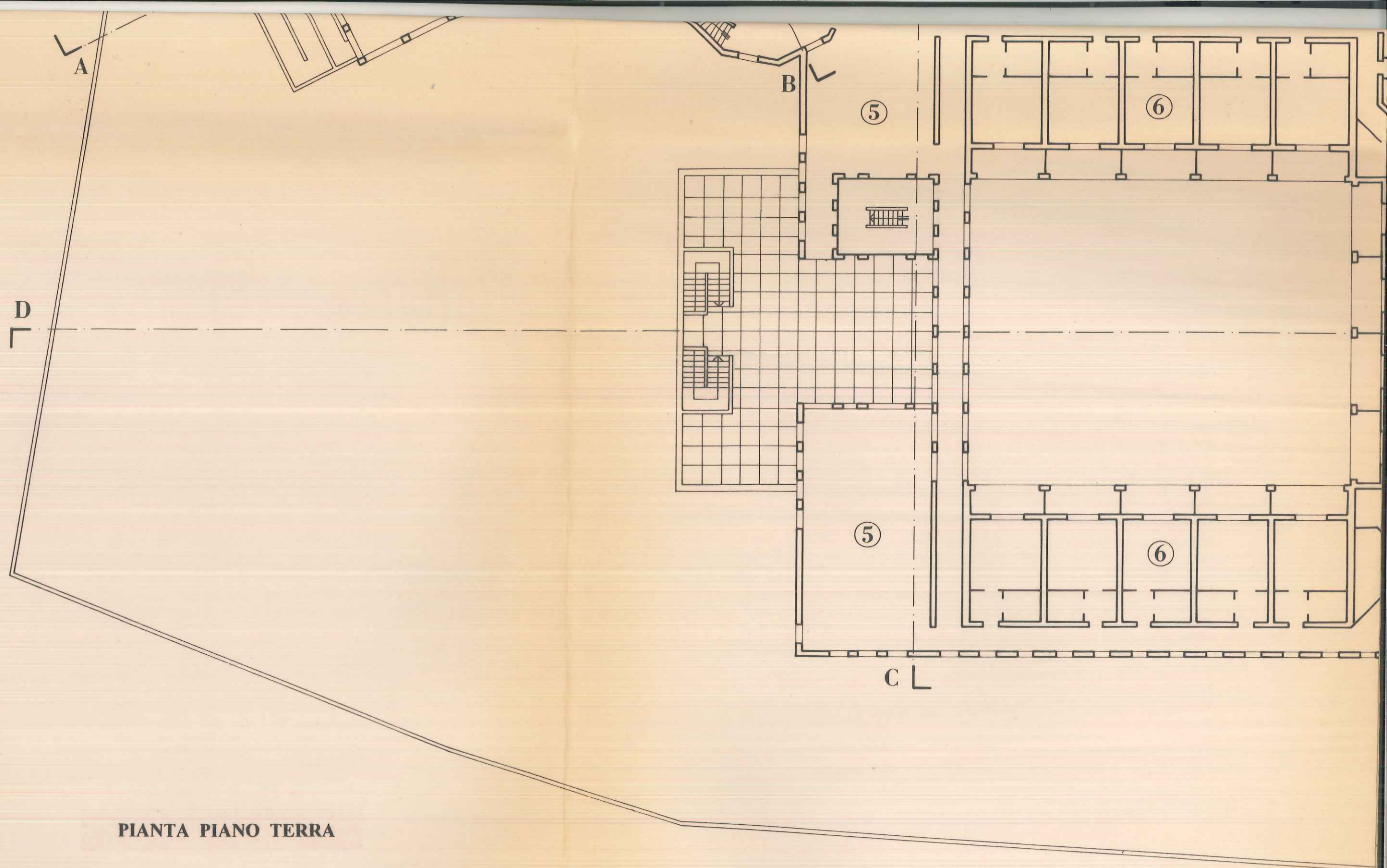
$$(80 \times 2) + 80 - (1,40 \times 2,20/2 \times 10) = \text{mq. } 224,60$$

Ristorante:

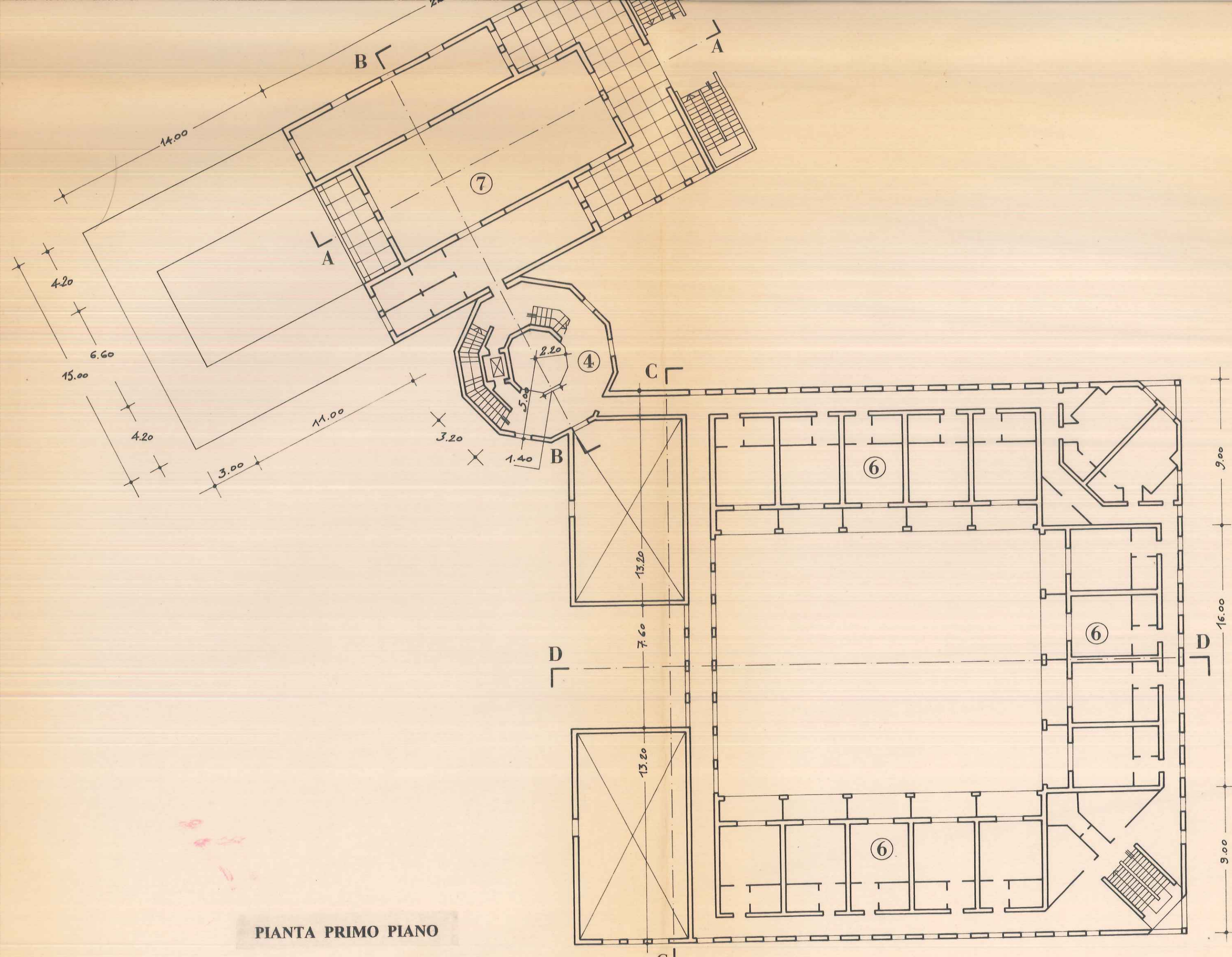
$$(339 \times 2) + 117,60 + 19,80 = \text{mq. } 815,40$$

TOTALE mq. 2.686,96

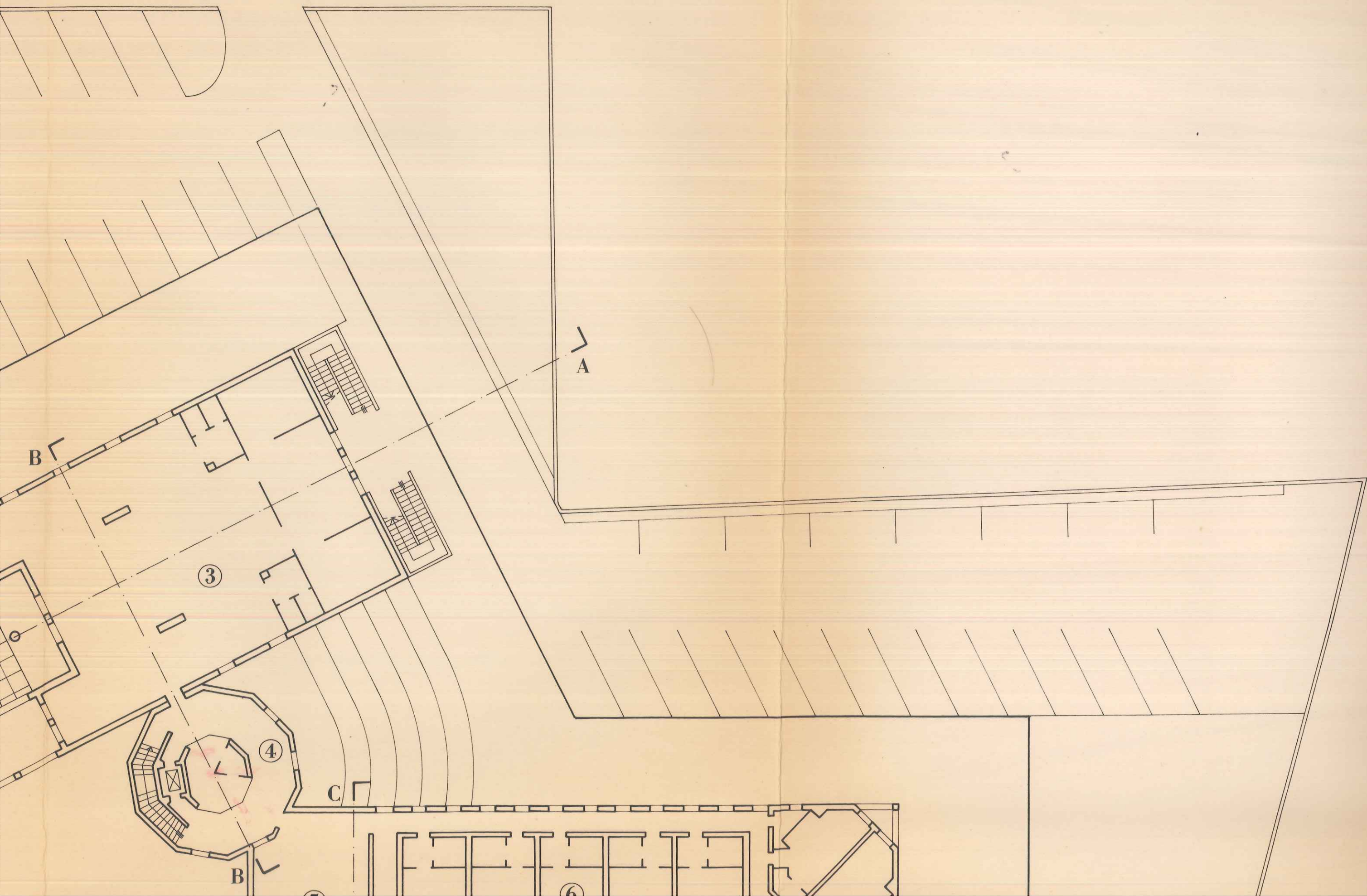


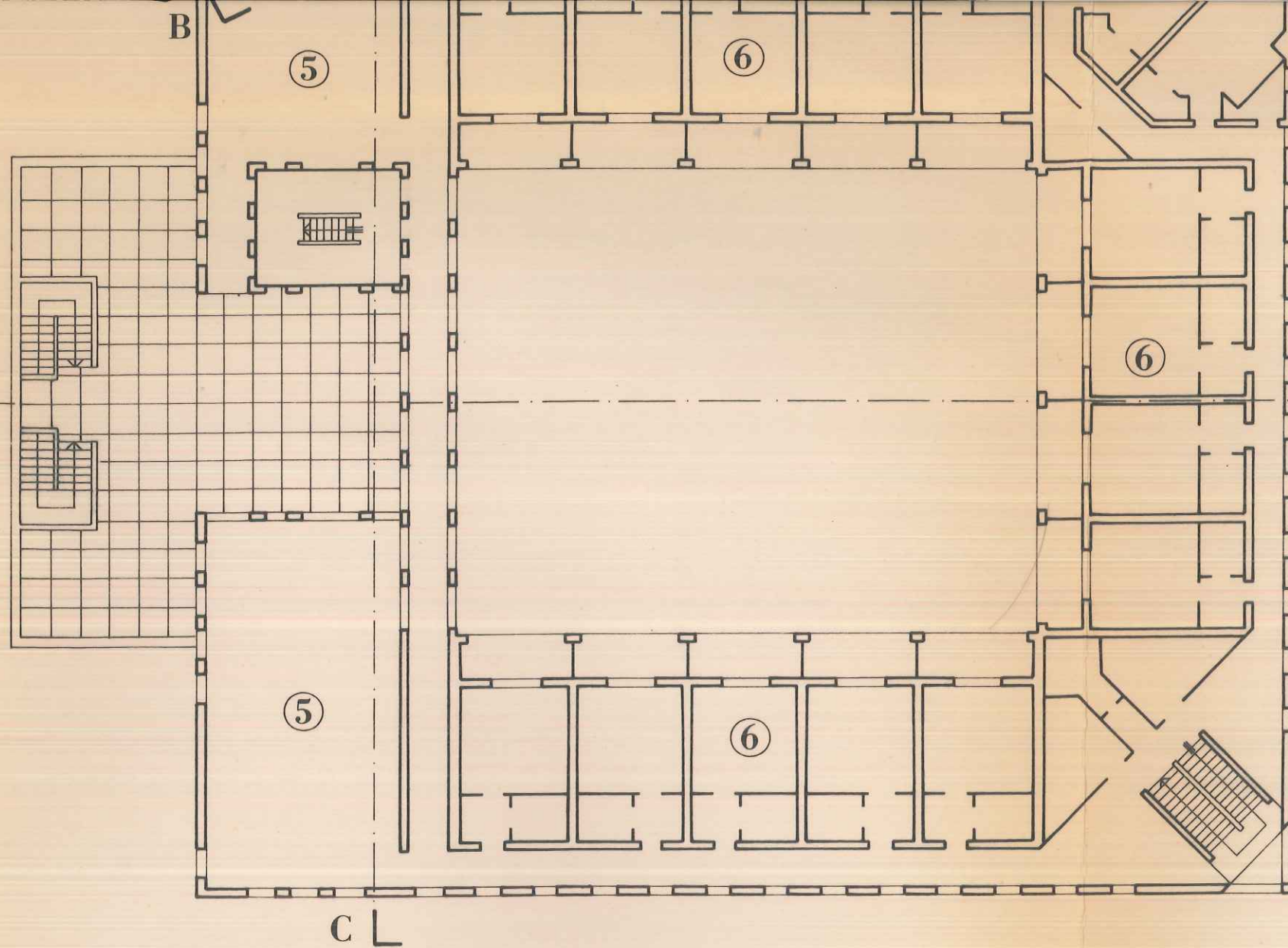


PIANTA PIANO TERRA



PIANTA PRIMO PIANO

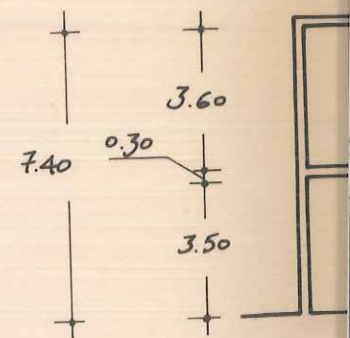
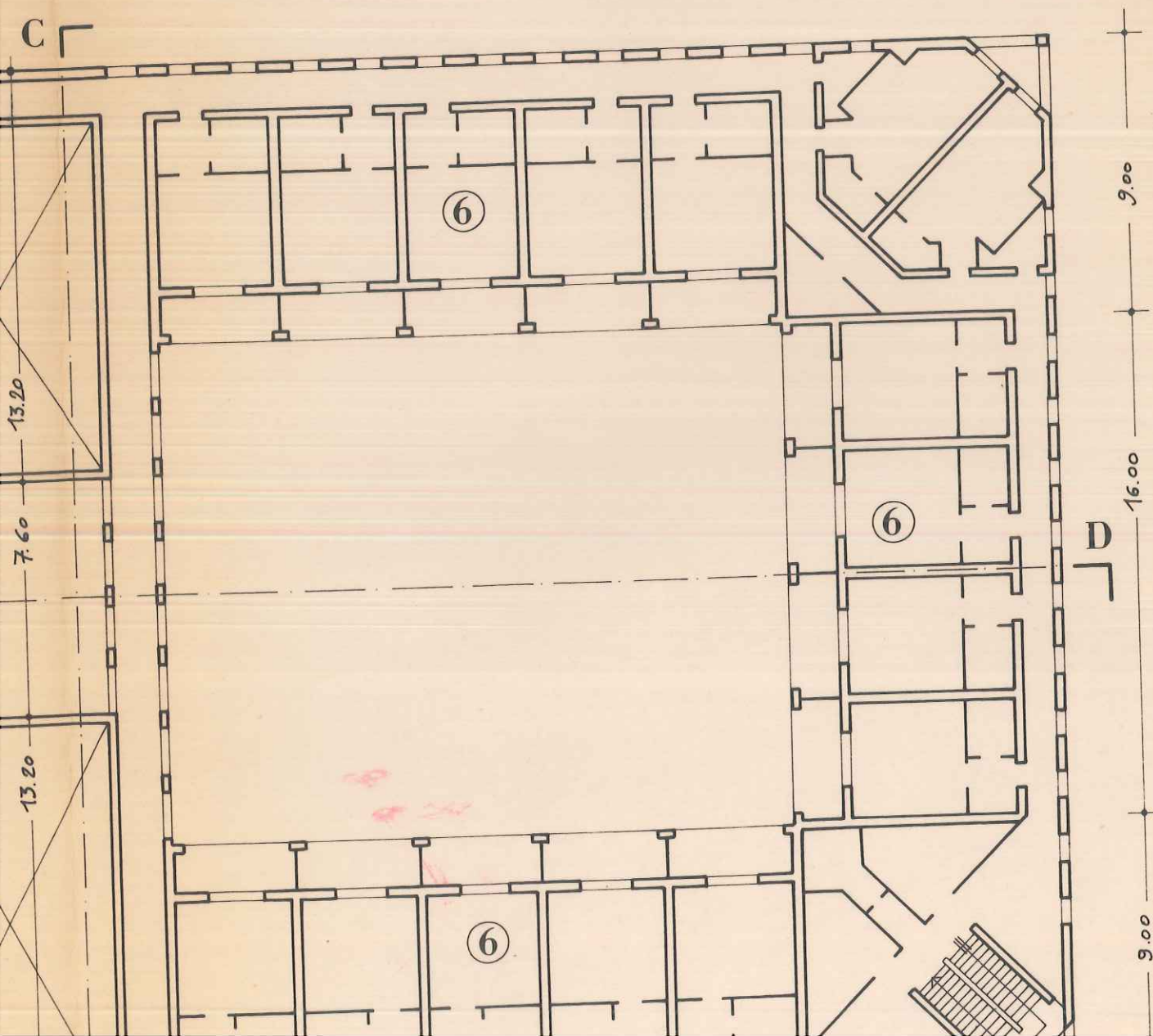


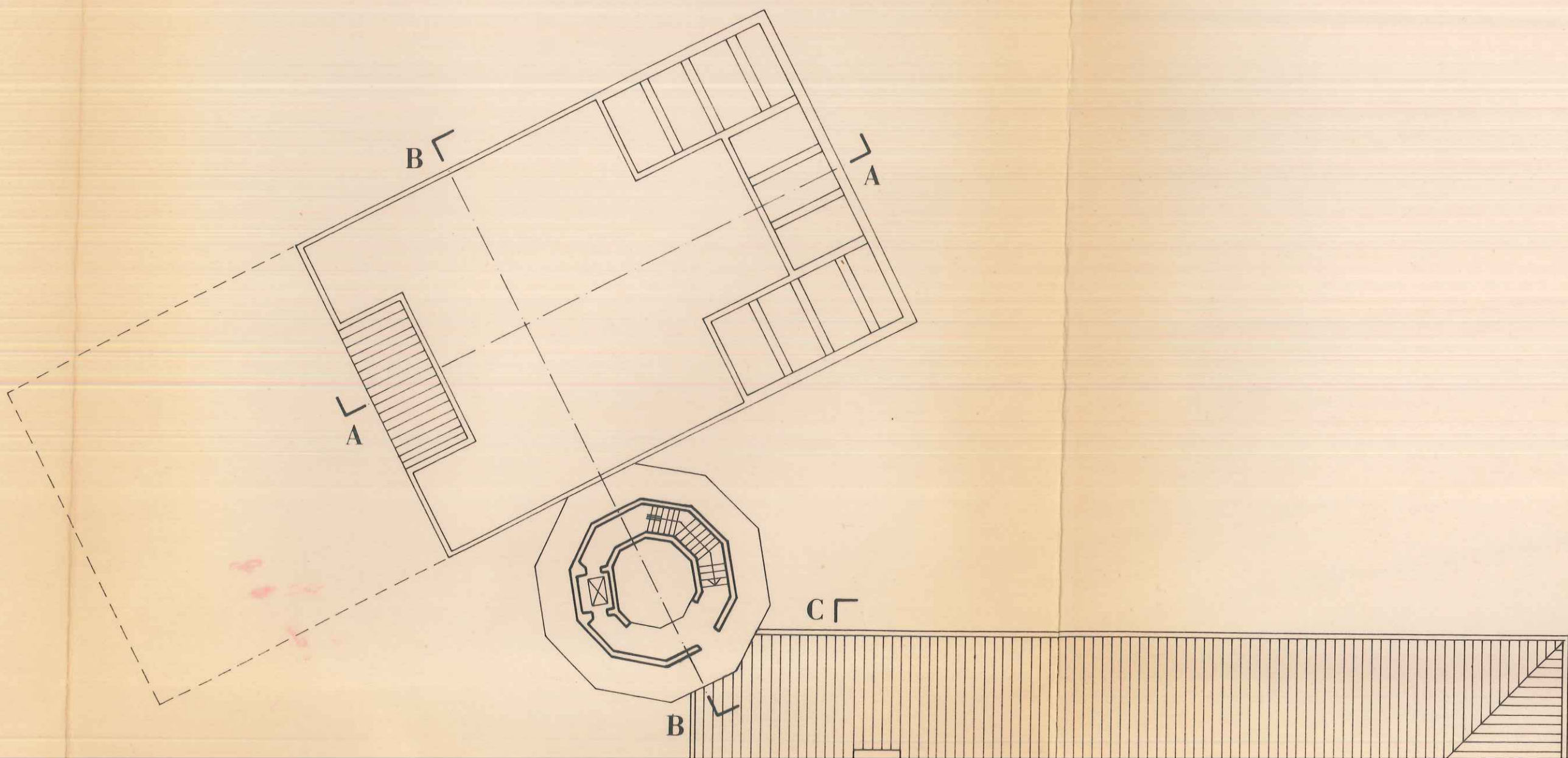


--- Linea di confine tra la proprietà privata e le aree di cessione

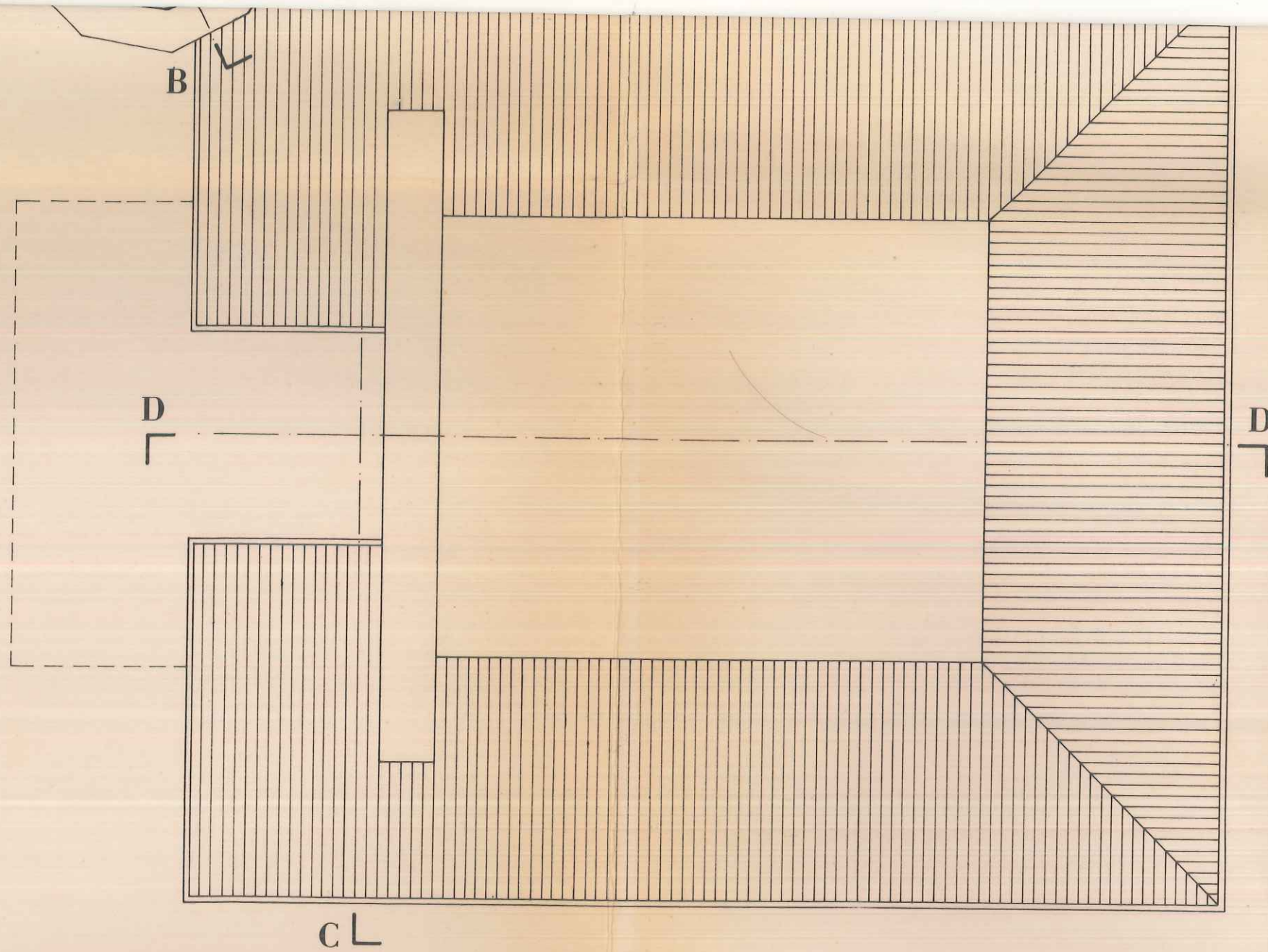
DESTINAZIONI D' USO :

- 1 - Bar
- 2 - Porticato coperto
- 3 - Ristorante e servizi connessi
- 4 - Hall / Spazi di distribuzione
- 5 - Spazi comuni
- 6 - Camere
- 7 - Sala convegni e servizi connessi

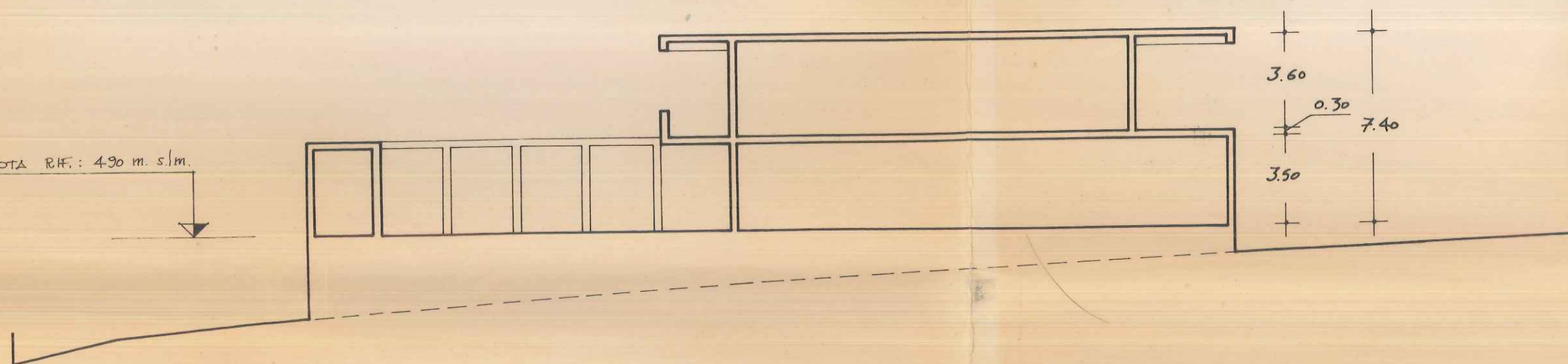




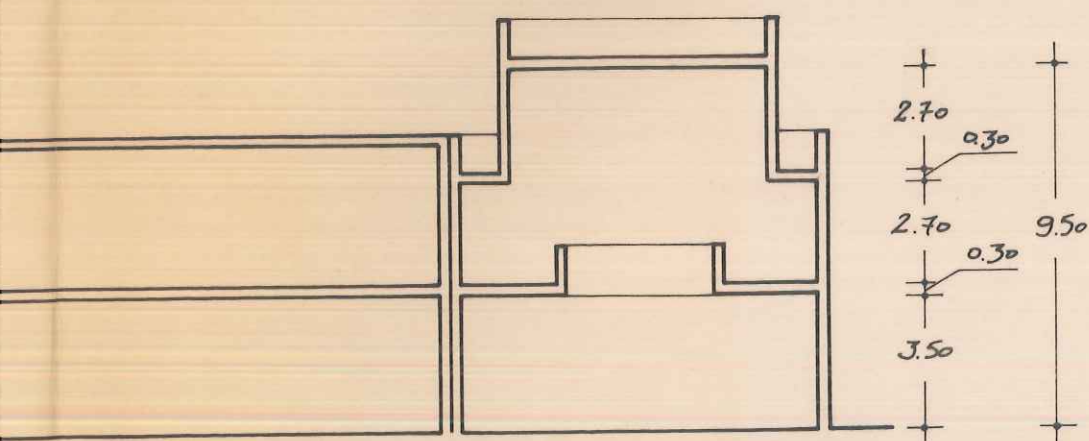
PIANTA DELLE COPERTURE



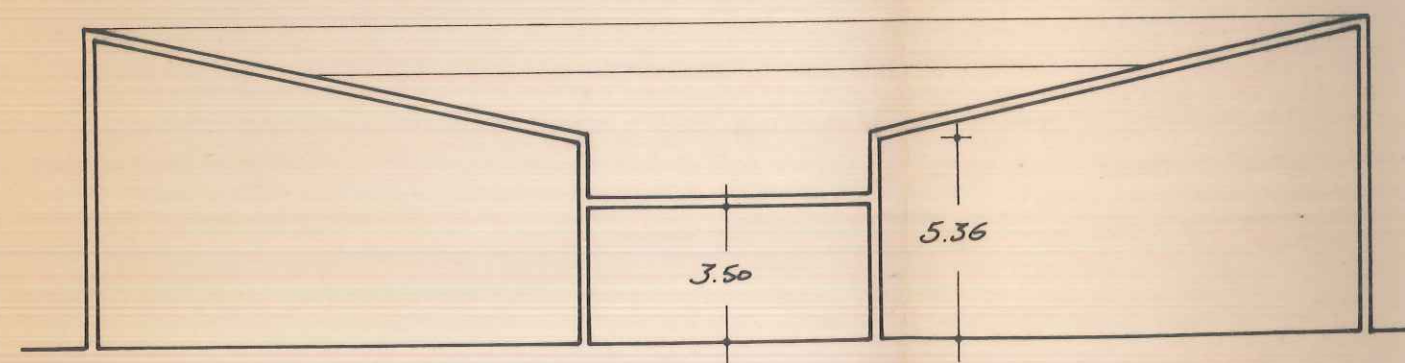
QUOTA R.H. : 490 m. s.l.m.



SEZIONE A-A

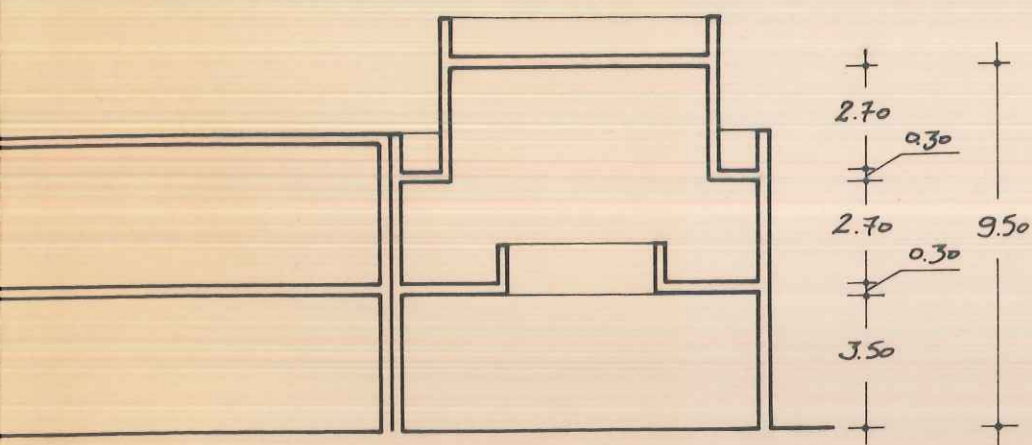


SEZIONE B-B

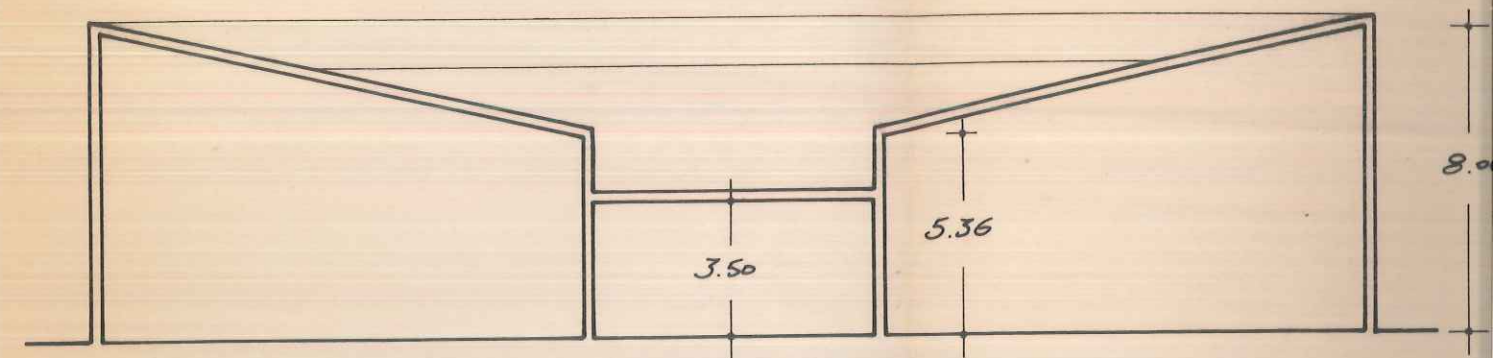


SEZIONE C-C

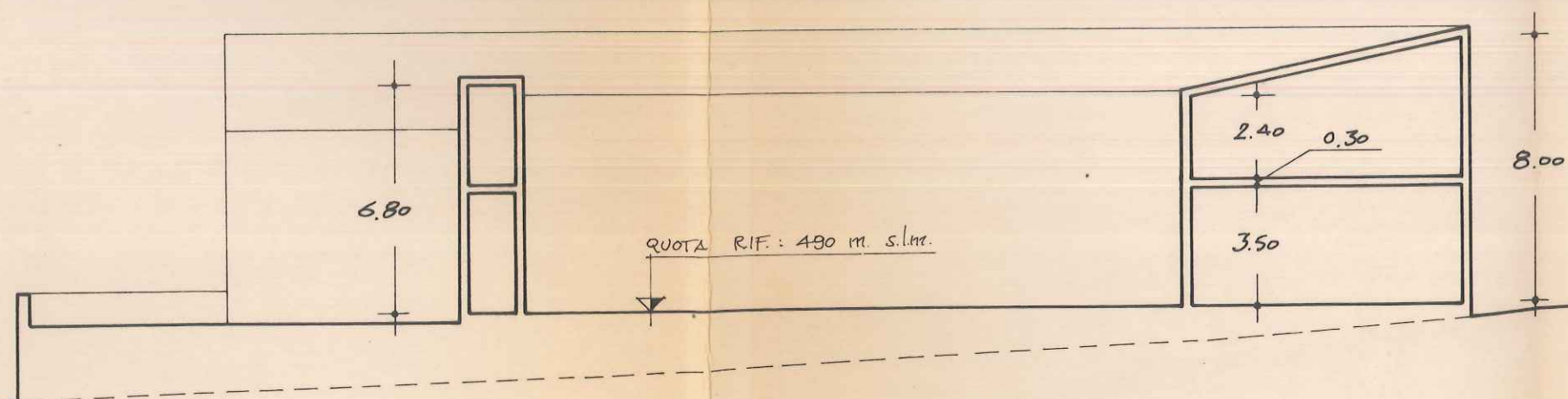
SEZIONE A-A



SEZIONE B-B



SEZIONE C-C



SEZIONE D-D